



# FAMILY SCAVENGER HUNT

## PATHS OF GOLD

*Japanese Landscape and Narrative Paintings from the Collection*

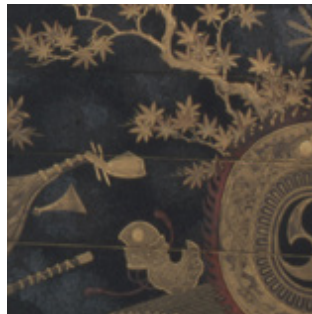
The scroll paintings, screens, and lacquer pieces in this exhibition are painted with gold. The addition of gold enriches the colors, shows wealth in the family, and also provides light by reflecting candle flames and lanterns off their golden surface.

Japanese screens are called *byōbu*, which means “wind barrier,” and could be moved within a room to create small spaces and stop drafts. These paintings told stories or taught a moral lesson. They depicted the changing seasons, traveling to temples, and gatherings of friends.

**Go on a scavenger hunt to find the items below, using the image details as your guide.** When you have found all these things, return to the Visitor Services desk to claim your prize. With it, you can design your own miniature screen at home to help you remember your visit today. What season, animal, tree, or story will you include?



*Two proud peacocks*



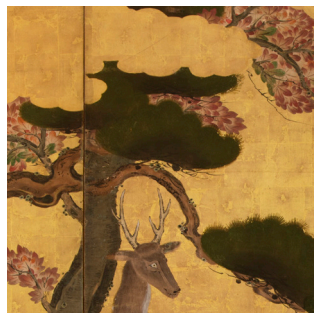
*A picnic set with a musical theme*



*A persimmon being watched by a nearby crow*



*Cherry blossoms on a hillside*



*A spotted deer under the arch of a tree*



*Children at play, walking a dog*



*Baskets of salt*

Hara ZAICHŪ, *Peacocks and Peonies* (detail), dated 1826. Ink, color, and gold on paper; six-panel folding screen. Lent by Natalia and Michael Howe. *Picnic Set with Food Boxes and a Sake Bottle* (detail), 19th–early 20th century. Lacquer, gold, and silver on wood; metal handle and fittings; signed “Ipposai.” SBMA, Gift of F. Bailey Vanderhoef, Jr. Kishi CHIKUDŌ, *Crows in Early Winter* (detail). Ink and color on gold ground; pair of six-panel folding screens. SBMA, Museum purchase with funds provided by Lord and Lady Ridley-Tree, Priscilla Giesen, and special funds. Attributed to HASEGAWA Sōtaku, *Cherry Blossoms at Yoshinoyama* (detail). Ink, color, and gold on paper; pair of two-panel folding screens, originally *fusuma* sliding doors. SBMA, Gift of Klaus Naumann. KANO School, Japanese, Edo period, early 17th century, *Deer in Autumn Landscape* (detail). Ink, color, and gold on paper; pair of six-panel folding screens, originally *fusuma* sliding doors. Loan from the collection of Clay Tedeschi. *Children at Play* (detail), Japanese, Edo period, late 18th–early 19th century. Ink, color, and gold on paper; six-panel folding screen. SBMA, Gift of Henry and Gwendolyn Baker. Attributed to TOSA Mitsuoki, *The Tale of Bunshō, the Salt Maker* (detail). Calligraphy by SANEKAGE Mushanokōji (1662-1738), calligraphy dated 1688. Ink, color, gold, and silver on paper; set of three handscrolls. SBMA, Museum purchase with the Peggy and John Maximus Fund and SBMA Friends of Asian Art.